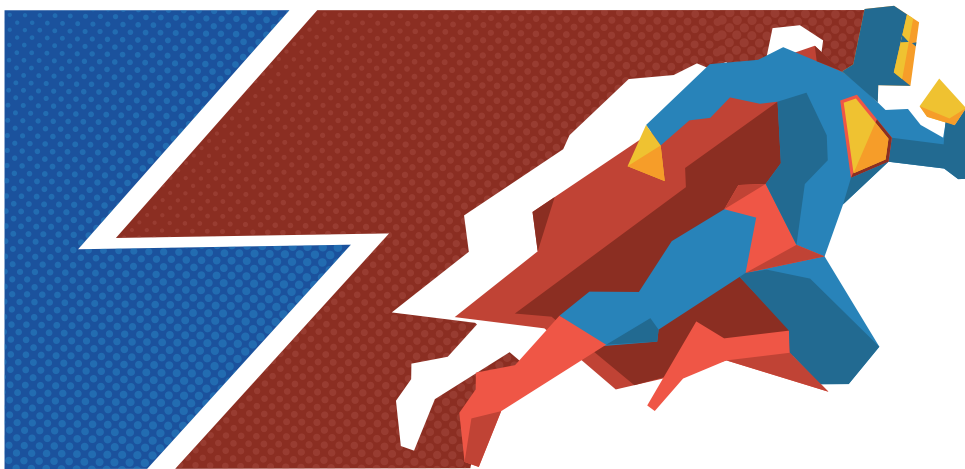


Superplex qPCR Kit [Probe]



Multiple Target Amplification in a Single Reaction

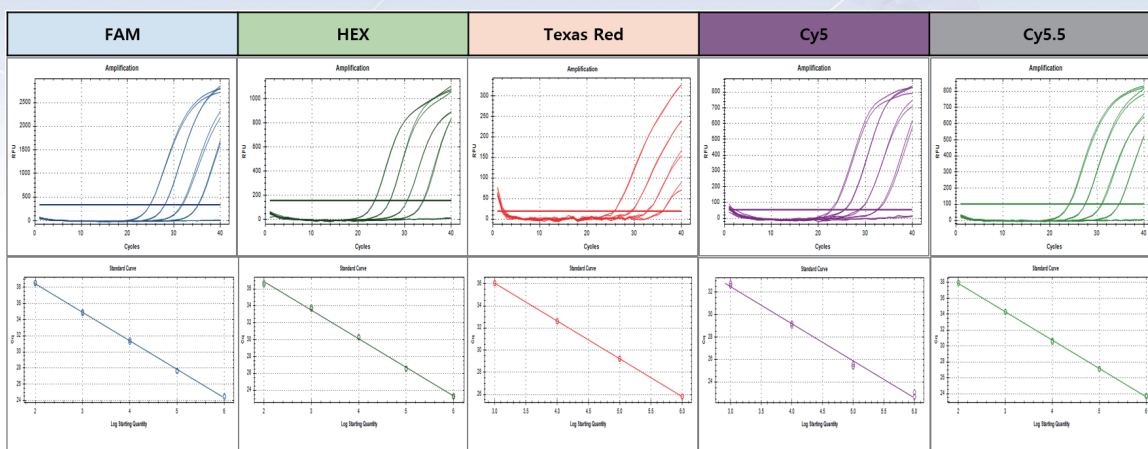
RealHelix™ Superplex qPCR Kit

- Probe-based real-time PCR reagent
- **Multiplex:** Up to 12-plex probe qPCR in a reaction
- Convenient 2x concentrated premix
- Specific, sensitive, and reliable
- Unique buffer system and hot start enzyme
- **UDG system** incorporated to prevent carry-over contaminations

RealHelix™ Superplex qPCR Kit [Probe] is designed for multiple target qPCR detections using dual-labeled probes in real-time PCR instruments. The kit consists of convenient 2x concentrated premix solution and ROX dye. The user-convenient 2x premix contains all required components including a hot-start *Taq* polymerase, heat-labile uracil-DNA glycosylase, dUTP, dNTPs, buffer, magnesium ions and stabilizing agents.

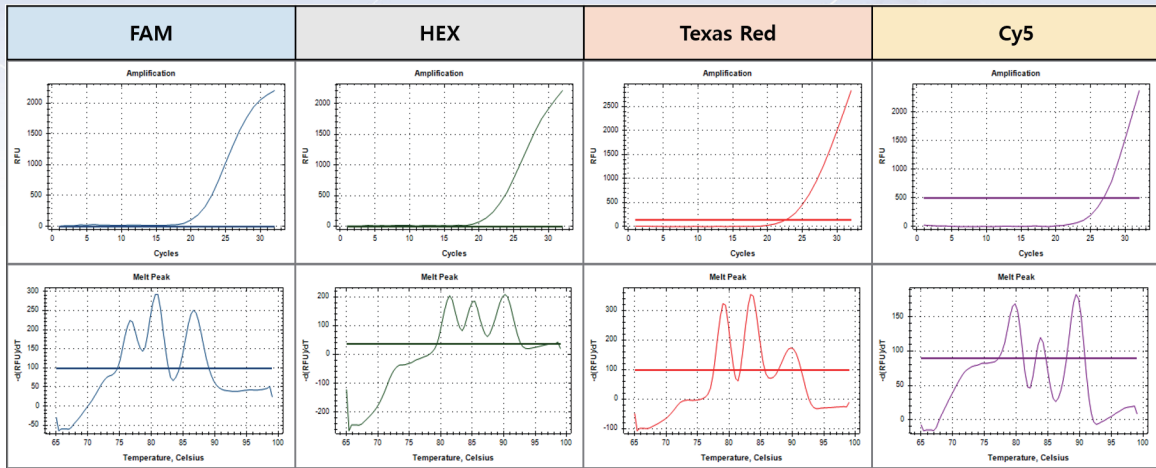
The hot-start *Taq* polymerase provides high specific amplification of target DNA and minimizes the side products such as primer dimers. This UDG/dUTP system prevents the carryover contamination of PCR products from previous reactions. Included ROX dye could be used as a passive reference dye.

Experimental Data



Multiple amplification of 5 targets in a reaction by RealHelix™ Superplex qPCR Kit [Probe].

The 5 targets labeled with different fluorescent reporter dyes were analyzed with this Superplex qPCR Premix [Probe]. Reactions were performed using the RealHelix™ Superplex qPCR Kit [Probe] on a real-time PCR instrument, Bio-Rad CFX9



12-targets multiplex amplification in a reaction by RealHelix™ Superplex qPCR Kit [Probe].

Using the allele-specific FMMA probes (labeled with FAM, HEX, Texas Red, or Cy5), twelve rice SNP genotypes were identified in a single reaction. A mix of rice genomic DNAs (total 10 ng) was used for the FMMA reaction to detect all of the 12 SNPs screened for determination of rice variants. The multiplex reaction was performed with the **RealHelix™ Superplex qPCR Kit [Probe]** on a real-time PCR instrument, Bio-Rad CFX96.



Ordering Information

Product	Size	Cat. No.
RealHelix™ Superplex qPCR Kit [Probe]	200 rxns	SUQ-P200
RealHelix™ Superplex qPCR Kit [Probe]	500 rxns	SUQ-P500

Bulk Product	Size	Cat. No.
RealHelix™ Superplex qPCR Premix [Probe], Bulk	Custom	BSUQ

HEADQUARTERS

- ✉ info@nanohelix.net
- ☎ +82 42 867 9055
- 📍 43-15, Techno 5-ro, Yuseong-gu, Daejeon, 34014, Republic of Korea
- 🌐 www.nanohelix.net

USA Office

- ✉ info_usa@nanohelix.net
- ☎ +1 484 235 2770
- 📍 987 Old Eagle School Rd Ste 709, Wayne, PA 19087-1708, United States
- 🌐 www.nanohelix.net